

## CARBON REDUCTION PLAN



### Carbon Footprint Assessment

Comprehensive analysis of our operational emissions to establish meaningful reduction targets.



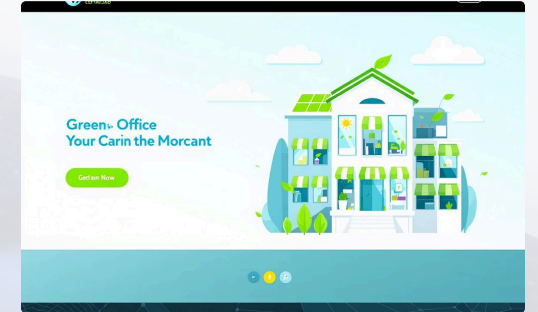
### Sustainable Transport Solutions

Transitioning our fleet to electric vehicles to minimize our service delivery emissions.



### Energy-Efficient Technologies

Implementing low-carbon solutions within our security and fire protection systems.



### Net Zero Commitment

Publication date: Our journey toward carbon neutrality in all operational activities.

## COMMITMENT TO ACHIEVING NET ZERO

OHEAP Fire & Security is committed to achieving Net Zero emissions by 2050.



### Renewable Energy Transition

We're investing in renewable energy sources to power our operations and reduce carbon footprint.



### Green Fleet Initiative

Transitioning our vehicle fleet to zero emission alternatives is a key part of our strategy.



### Carbon Offset Programs

Supporting carbon sequestration projects to balance emissions on our path to Net Zero by 2050.

[www.oheap.co.uk](http://www.oheap.co.uk)

[enquiries@oheap.co.uk](mailto:enquiries@oheap.co.uk)

0330 999 8786



## BASELINE EMISSIONS FOOTPRINT

Baseline emissions are a record of the greenhouse gases that have been produced in the past and were produced prior to the introduction of any strategies to reduce emissions. Baseline emissions are the reference point against which emissions reduction can be measured.



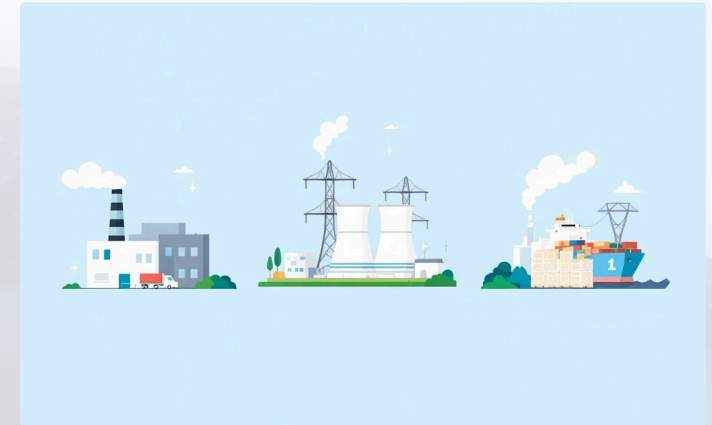
### Emissions Measurement Process

Our baseline measurement year is 1 April 2021 to 31 March 2022, chosen as a representative period after COVID-19 disruptions.



### COVID-19 Impact

2020 was deemed unsuitable as our baseline year due to reduced business travel, limited customer access, and lower office occupancy during the pandemic.



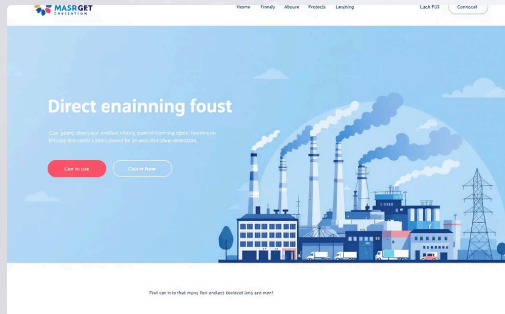
### Emission Scopes

Our total emissions of 593.25 tCO<sub>2</sub> comprise Scope 1 (270.14), Scope 2 (20.54), and Scope 3 (302.57) emissions from our operations.

The process of measuring emissions began in 2020, but 2021 provides a more accurate baseline as it better reflects our normal operational patterns and energy consumption levels.

## CURRENT EMISSIONS REPORTING

Reporting Year: 1 April 2025 to 31 March 2026



**Scope 1 Emissions:**  
259.37 tCO<sub>2</sub>e

Direct emissions from company-owned or controlled sources such as vehicle fleet and on-site fuel combustion.



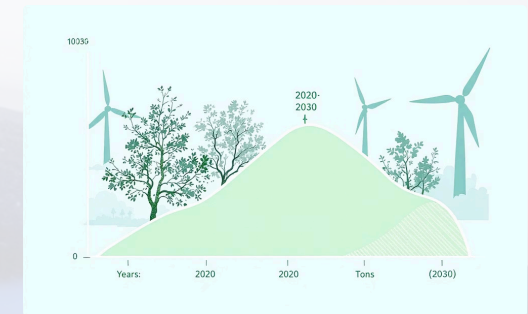
**Scope 2 Emissions:**  
19.36 tCO<sub>2</sub>e

Indirect emissions from purchased electricity, heating, and cooling consumed by our facilities.



**Scope 3 Emissions:**  
295.67 tCO<sub>2</sub>e

Other indirect emissions from our value chain, including business travel, employee commuting, and waste disposal.



**Total Emissions: 574.40 tCO<sub>2</sub>e**

Our overall carbon footprint shows a 3.2% reduction compared to our baseline year, demonstrating progress toward our Net Zero commitment.

The visualizations above illustrate our progress against emission reduction targets across all scopes of our operations.

## CARBON REDUCTION PROJECTS

### Completed Carbon Reduction Initiatives

Since our baseline year, we've implemented several key strategies to reduce our carbon footprint while maintaining operational efficiency:



#### Commercial Vehicle Fleet

Our fleet includes 59 commercial vehicles that remain diesel powered due to operational requirements - they carry heavy loads and require 200+ miles of daily range that current electric alternatives cannot provide.



#### Transitioning Executive Vehicles

We've introduced 2 fully electric cars and six hybrid cars to our fleet of 16 cars used by managers and sales consultants, replacing conventional fuel vehicles from our 2021-22 baseline.



#### Remote Working Solutions

We've reduced travel needs by implementing homeworking for all sales consultants and utilizing technological solutions to reduce reliance on physical site visits for preparing quotations.



#### ISO14001:2015 Certification

We are proud to have achieved certification to ISO14001:2015, which serves to raise awareness and bring environmental impacts to the forefront of the company's thinking when it comes to business strategy.

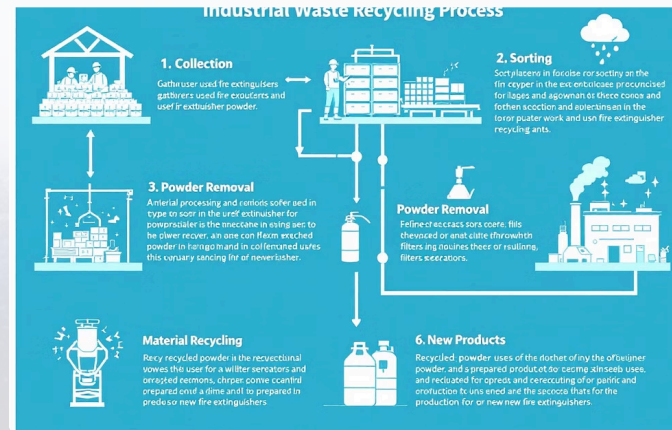
## ENERGY EFFICIENCY AND SUPPLY CHAIN MANAGEMENT

Turning to Scope 2, we operate from a single modern commercial building constructed in 2018. This building was already highly energy efficient at the baseline year, with hot water and heating supplied by an air source heat pump, LED lighting throughout (much of which is PIR controlled), and electricity supplied on a renewable energy tariff.



### Energy Efficient Building

Our 2018 constructed facility features air source heat pumps for heating and hot water, with LED lighting throughout and renewable energy supply.



### Waste Management

Our methodology for reprocessing waste powder from extinguishers reduces landfill waste by over 12 tonnes annually.



### Transport Optimization

We implement drop shipping of larger orders directly to customers, significantly reducing unnecessary transportation and associated emissions.

In terms of Scope 3, our upstream supply chain is extensive and, in most cases, we are unable to exercise influence over the suppliers' own actions to reduce emissions. We are also mindful of the need to avoid double counting, as the emissions relating to sourcing of raw materials, production of the goods and transportation to ourselves will be part of the manufacturers' and suppliers' Scope 1, 2 and 3 measurements.

The vast majority of items we buy and sell are either packaging free or have cardboard packaging, and we continue to make concerted efforts to reduce, reuse and recycle wherever possible.

## ACHIEVEMENTS AND FUTURE PLANS

We've implemented several key initiatives to reduce our carbon footprint, with measurable results against our 2021-22 baseline. These measures will remain in effect for all current and future contracts.



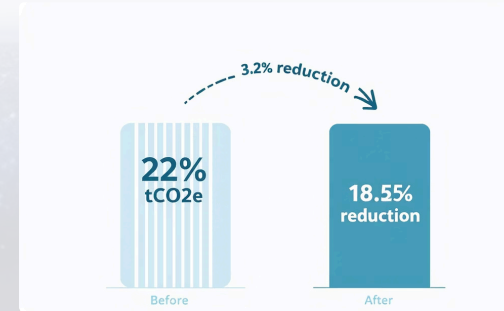
### Waste Management

Our methodology for reprocessing waste powder from extinguishers reduces landfill waste by over 12 tonnes annually, contributing significantly to our sustainability goals.



### Drop Shipping Implementation

We've arranged direct shipping of larger orders from supplier to customer, eliminating unnecessary transportation and reducing associated emissions.



### Measured Impact: 18.85 tCO<sub>2</sub>e

Our carbon reduction initiatives have achieved a 3.2% decrease in emissions compared to our baseline year, demonstrating our commitment to measurable progress.

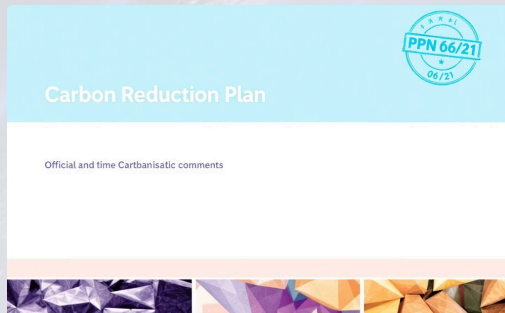


### Future Fleet Transition

We plan to transition our commercial vehicle fleet to alternative fuels, subject to advances in battery technology, charging infrastructure improvements, and legislative changes regarding fossil fuel vehicles.

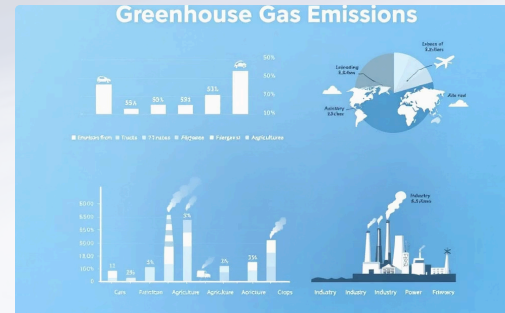
## DECLARATION AND SIGN OFF

This Carbon Reduction Plan demonstrates our commitment to environmental responsibility and regulatory compliance.



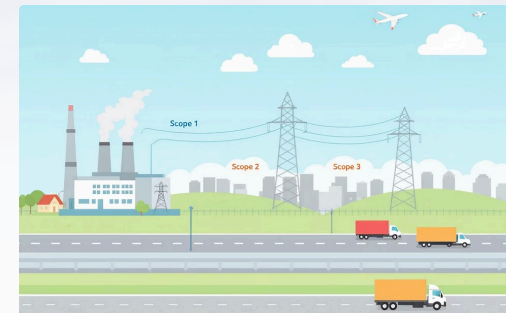
### Compliance Standards

This Carbon Reduction Plan has been completed in accordance with PPN 06/21 and associated guidance and reporting standard for Carbon Reduction Plans.



### Emissions Reporting

Emissions have been reported and recorded in accordance with the published reporting standard for Carbon Reduction Plans and the GHG Reporting Protocol corporate standard using the appropriate Government emission conversion factors.



### Scope Coverage

Scope 1 and Scope 2 emissions have been reported in accordance with SECR requirements, and the required subset of Scope 3 emissions have been reported in accordance with the published standard for Carbon Reduction Plans.



### Official Authorization

This Carbon Reduction Plan has been reviewed and signed off by the Managing Director.

Nicholas Heap, Managing Director

21/04/2026

### References:

1. <https://ghgprotocol.org/corporate-standard>
2. <https://www.gov.uk/government/collections/government-conversion-factors-for-company-reporting>
3. <https://ghgprotocol.org/standards/scope-3-standard>