

## Complete Security with Style





# OHEAP

## FIRE & SECURITY

OHEAP Fire and Security offer a complete range of security systems to ensure you can control and protect every element of your business.

Whether you need to control access to your building, prevent crime from happening in the first place with an intruder alarm, or keep a close eye on operations with a reliable CCTV or VSS system, OHEAP can help.

We offer British manufactured and supported products to ensure quality and integrity, whilst reducing our supplier miles and keeping our carbon footprint to a minimum.

But OHEAP offer so much more than security systems and products.

As a NSI Gold accredited company, our qualified engineers provide the expertise required to install and maintain your security system.

With more than 30 years experience, our security department offers a personal touch with no call centres, just experts a call away when you need them. We also offer a 24/7 callout service if you need it.

0330 999 87 86



**GOLD**

British Products with Quality Service



## App

A range of iOS & Android Apps giving secure access to control panels. Allows you to remotely set/unset your alarm system



## Prox Readers

Both internal and external prox readers available to control your system simply using NFC technology.



## Keypads

Enter your personal access code onto any one of an extensive range of keypads. A choice of finishes to suit any interior.



## Control Panel

The command centre of your system, with versions to secure every property from residential to large commercial.



## Keyfobs

Two and four button keyfobs with exceptional range and battery life. Allows you to remotely set/unset your alarm system. Can also be used to open and close garage doors/gates, trigger panic alarms, switch lights on and off and more.



## Control 4

Control panels can now integrate with Home Automation Systems

## Prox Tags

Present the discreet, compact tag to any of our keypads or NFC Reader to simply and easily set and unset your system using NFC technology.



## Keypads

### 400 Series



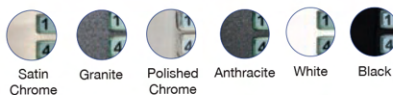
### 500 Series



### MK-700 Series



### RK-700 Series



### 800 Series



### 900 Series



### 1000 Series



### Touchscreen



## Panels

Protect your family, home or business with the most advanced intruder alarm technology.

Featuring from 10 - 500 zones and available in both wired and wireless versions, there is a panel to suit every property.

### Wireless Control Panels



Available with either integrated keyed or touchscreen keypad or as a blank endstation

40 zones

### Grade 2 Hybrid Control Panels - Blank Endstations



10-60 zones

### Grade 2 Hybrid Control Panels - On Board Key pads



Available with either integrated keyed or touchscreen keypad

10-60 zones

Standard & PLUS versions available

### Grade 3 Hybrid Control Panels



30-500 zones

Panels & Keypads  
...Exceptional Performance



### Motion Detectors

All our detectors have been expertly designed to detect the movement of intruders whilst avoiding unwanted false alarms.



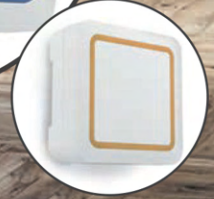
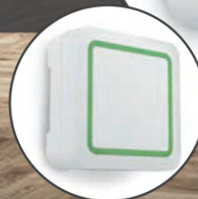
### Door & Window Contact Detectors

These monitor the opening of doors, windows, cupboards, drawers etc. Visible or hidden/covert versions are available in 3 different colours.



### Internal Sounders & Loudspeakers

Internal Sounder features 5 programmable high level alarm sounds, a long life strobe, multi-coloured LED indication status and low-level notification tones (for example entry/exit, chime, warning etc) Available in both wired and wireless versions.







### Ceiling Mount Detectors

Outstanding detection in a sleek and easy to install housing. The Orisec 360 detectors achieve the ultimate balance between detection performance and false alarm immunity.

### Shock Detectors

Shock detectors monitor windows and doors for vibrations caused by attempted break-ins and will activate an alarm before an intruder gains entry to your property. Visible or hidden/covert versions are available in 3 different colours.



### Fire, Flood & Heat Detectors

Each model in the Fire, Flood & Heat detector range can operate as a stand-alone detector with an integrated sounder. They can also be interlinked so that all detectors will sound in the event of a fire. Furthermore, the detectors can be integrated with all Orisec wireless devices so that activations can be reported via the control panel to a monitoring station or to our mobile phone apps.

# Internal Detectors

Cover every angle



## W-ROX-1

The W-ROX-1 Wireless Relay Output Expander features a 1A/24V relay to operate equipment remotely from any Orisec control panel. Examples include CCTV, garage doors, sprinklers, outdoor lighting, outdoor sirens and electric gates.

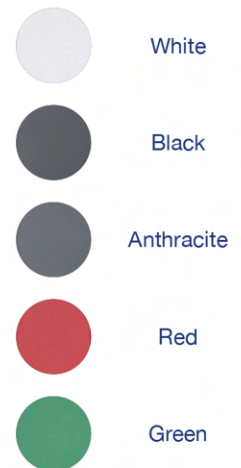


## W-DB Wireless Doorbell / Push Button

- White, Anthracite, Black, Red or Green
- Push notification to your app
- 4 Tone Chime Options

### Usage Examples

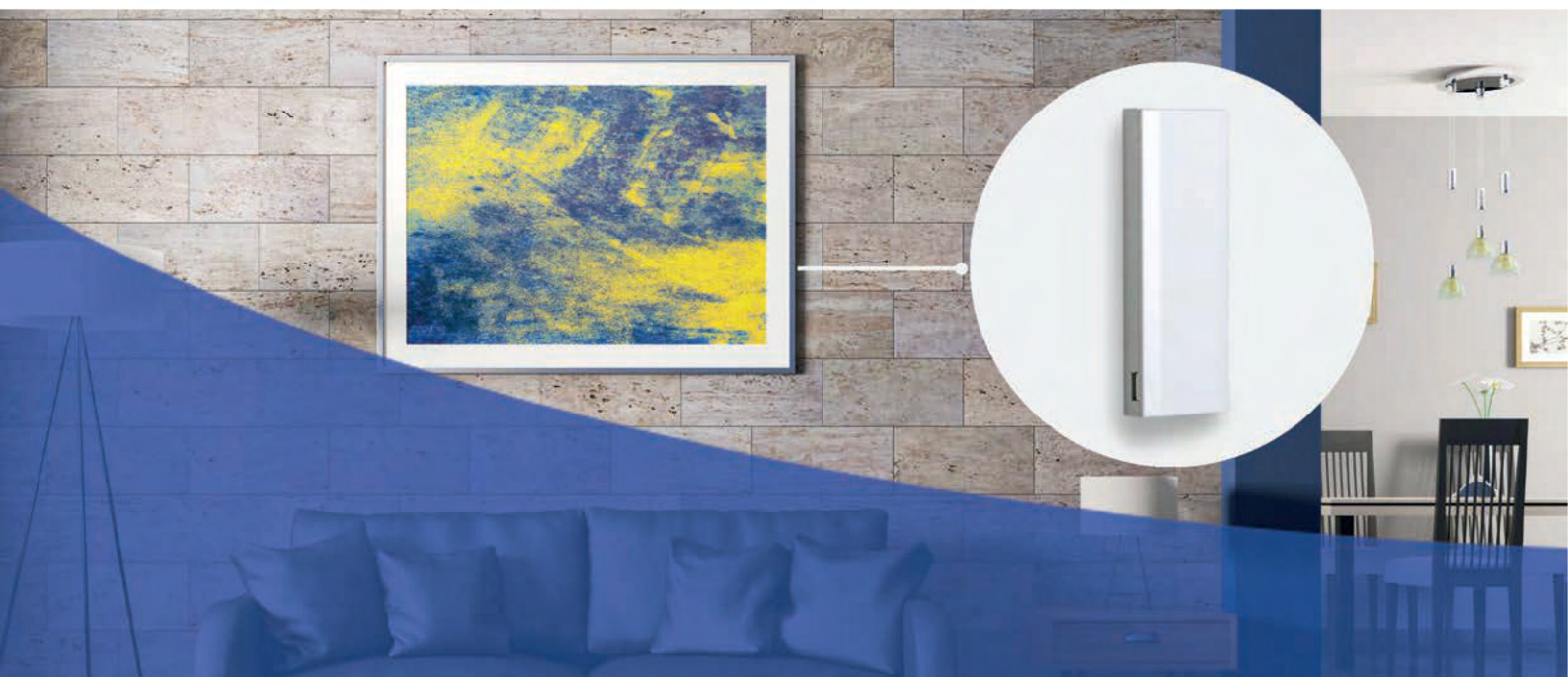
- Chime / Doorbell
- Push to Exit
- System Arm
- Elderly Care / Help Call
- Remote Control e.g. Gates, Doors etc



## Accelerometer

Designed to protect your most valuable possessions, the W-ACC-C is discreet enough to be concealed in or on almost any item and signals an alarm when the object is moved.

Ideal applications include valuable paintings, jewellery boxes, fine art, drawers, cupboard doors, safes etc.





## ControlPlus App

The ControlPlus app gives users complete visibility of their system from anywhere.



### Alarm Notifications

Break-in, fire, flood etc



### Family Care

Reassurance that young or elderly relatives are safe & well



### Set & Unset

your system remotely



### Remotely Control

Garage doors, gates, CCTV, lights etc



Apps

Advanced and easy to use.





### External Sounder

This acts as a highly visible deterrent to inform potential intruders that your property is protected. It emits a 115-decibel alarm siren if your alarm system is triggered.

### Decoy Backplate & Dual LED Flasher Module

The Decoy sounder mimics the live external sounder, without the additional cost and wiring, to act as an extra deterrent in remote parts of a property. The Dual LED Flasher Module comes with ultra-high visibility LEDs, programmable flashing options, plus an extended battery life of up to six years.

**Illuminated Sounder**  
For an even greater security deterrent, illuminated versions are available to increase visibility during darkness.



### External Detectors

Designed for CCTV, Lighting and Intruder Alarm applications. With over 20 variants to choose from, including wired and wireless, there is an external detector for every installation.

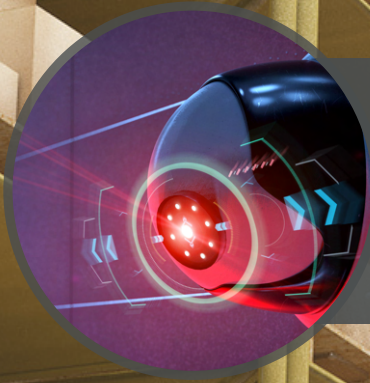
**External Detection**  
First line of defence



# CCTV & Alarm Monitoring

## CCTV Monitoring

Long term and rapid deployment CCTV systems for anything. Monitor family homes, commercial properties, building sites, Power stations and high-profile Government sites.

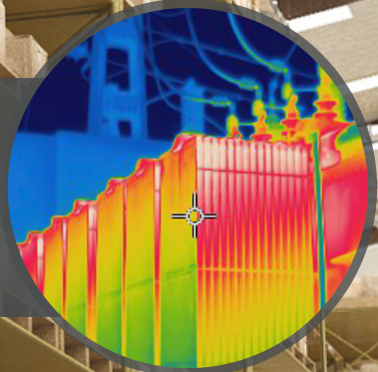


## Video Analytics

The very latest in ground-breaking CCTV solutions, such as Artificial intelligence false alarm management, video analytics and human and vehicle detection.

## Thermal Detection

Thermal monitoring can be used for a wide variety of high-risk CCTV related fire sites, monitoring for food production or reading the body temperature of people entering premises.



## Remote Barrier

Controlling the access of both people and vehicles onto a site. Gates, barriers and electric fences can be fully integrated with Access Control, alarm and CCTV systems to provide a complete control solution, allowing the monitoring, recording and movement.

Trusted Suppliers





# Surveillance Solutions & Video Management

## **Protection Level 1: Domestic & Small Commercial**

- 4K Resolution
- 2 SATA (Up to 8TB Per CH)
- ePoE
- AI Smart Analytics
- Human & Vehicle
- AI Deep Learning
- Face Detection



UK APP

## **Protection Level 2: Medium Commercial & Education**

- 4K Resolution
- 2 SATA (Up to 20TB Per CH)
- AI Smart Analytics
- Plug & Play
- Human & Vehicle
- AI Deep Learning
- Face Detection
- ANPR



UK Hosted Servers



## **Protection Level 3: City (Emergency, Council & Large Commercial)**

- 4K Resolution
- 24 SATA (4u)
- 12 SATA (2u)
- Plug & Play
- ANPR
- P2P
- Human & Vehicle
- AI Smart Analytics
- AI Deep Learning



Developed & manufactured in the UK

# OHEAP

## FIRE & SECURITY



Tel: 0330 999 8786  
[www.oheap.co.uk](http://www.oheap.co.uk)